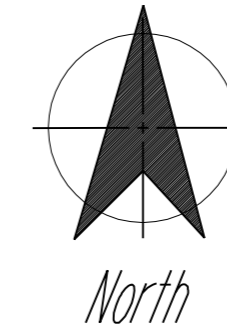


# OFFICIAL ZONING MAP CHARTER TOWNSHIP OF CALEDONIA KENT COUNTY, MICHIGAN

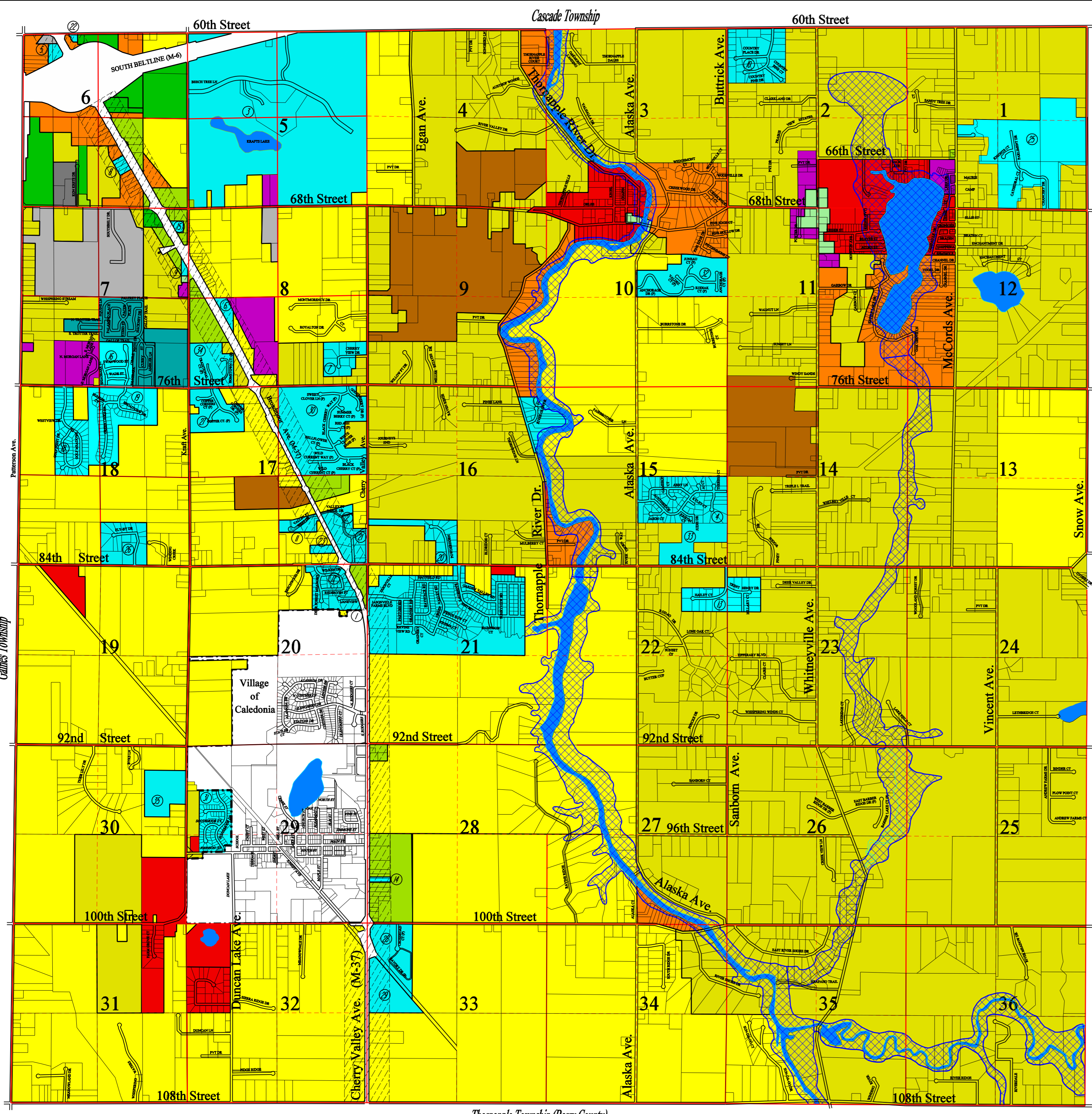
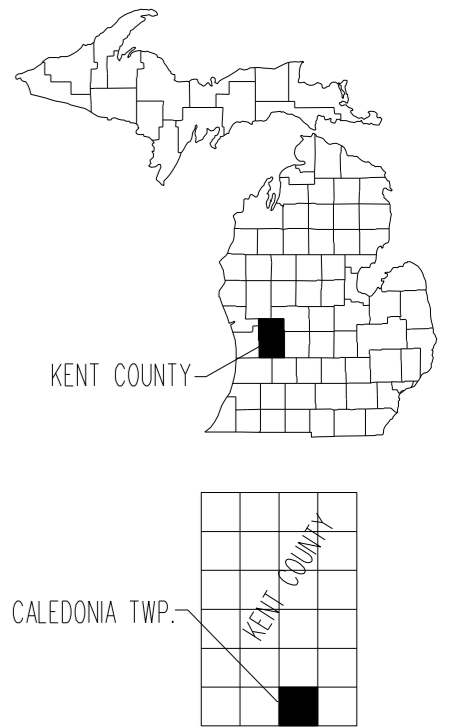
Includes changes through February 4, 2009



### Map Legend:

- A Agricultural
- R-R Rural Residential
- R-1 Low Density Single Family
- R-2 Medium Density Single Family
- R-3 Medium Density Multiple Family
- C-1 Neighborhood Business
- C-2 General Business
- H-C Highway Commercial
- I-1 Light Industrial
- I-2 Heavy Industrial
- PUD Planned Unit Development
- PMR Planned Mineral Removal
- F Flood Plain
- MHC Manufactured Housing Community District
- Broadmoor/Cherry Valley Corridor Overlay

- PLANNED UNIT DEVELOPMENTS**
- |                                      |   |
|--------------------------------------|---|
| 1 BROADVIEW COUNTRY ESTATES          | 18 GOLFSIDE MEADOWS                     |
| 2 VALLEY POINT INDUSTRIAL PARK       | 19 THE GREENS OF BROADMOOR COUNTRY CLUB |
| 3 KRAFT LAKE OFFICE PARK             | 20 COPPER RIDGE                         |
| 4 AUSTINRIDGE                        | 21 VALLEY POINT SOUTH INDUSTRIAL PARK   |
| 5 FIFTH THIRD BANK                   | 22 VERMURLEN OFFICE                     |
| 6 M-37 BUSINESS PARK EAST            | 23 COUNTRY TURF                         |
| 7 CHERRY VIEW ESTATES                | 24 JASONVILLE FARMS                     |
| 8 GOURMET FOODS INTERNATIONAL        | 25 BLACKSTONE ESTATES                   |
| 9 PROFESSIONAL SHOPPING SERVICES     | 26 WING FIELD ESTATES                   |
| 10 COUNTRY VIEW ESTATES              | 27 COPPER CORNERS                       |
| 11 VALLEY POINT WEST INDUSTRIAL PARK | 28 CALEDONIA CROSSROADS                 |
| 12 RIVER GLEN                        | 29 SOUTH POINT PARK                     |
| 13 TRENT HENRY MEADOWS               | 30 CHERRY WOODS/MEADOWS                 |
| 14 CALEDONIA RENT ALL                | 31 SCOTSMOOR                            |
| 15 BROADMOOR MOTORS                  | 32 FAIRBANKS ESTATES                    |
| 16 SHAGBARK CONDOMINIUMS             | 33 COPPER HEIGHTS                       |
| 17 SPRING VALLEY ESTATES             | 34 TRADITIONS                           |
|                                      | 35 MEADOWVIEW                           |



This map is subject to revision and interpretation as permitted in the Caledonia Township Zoning Ordinance and the Township Rural Zoning Act. Prior to taking any action based on the content of this map, consultation with the Zoning Administrator is strongly advised.

REVISED February 4, 2009